

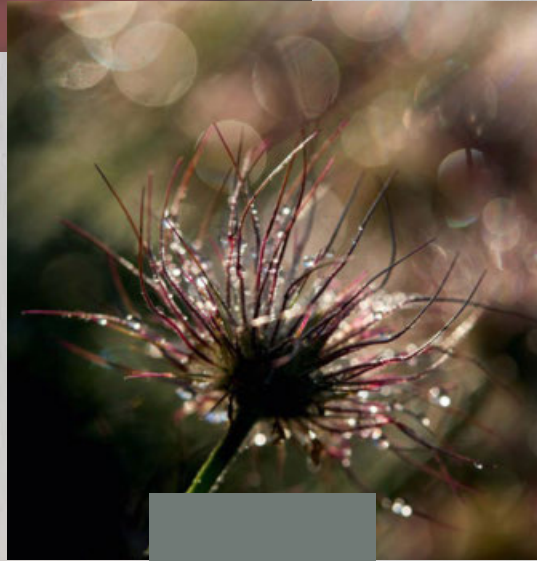
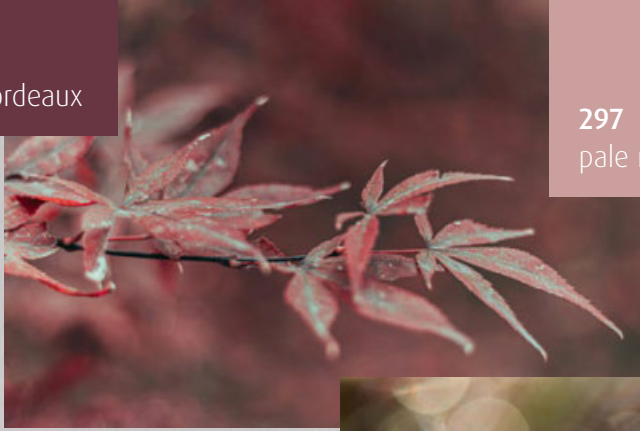
sassa

herbst winter autumn hiver 2026

You deserve more

293 bordeaux

297
pale mauve



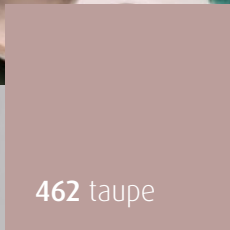
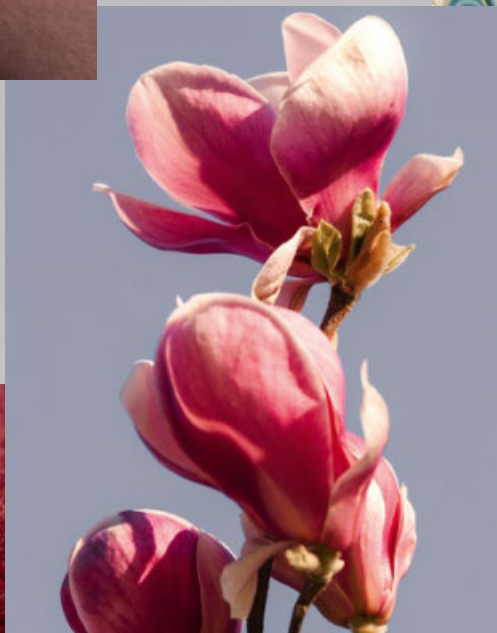
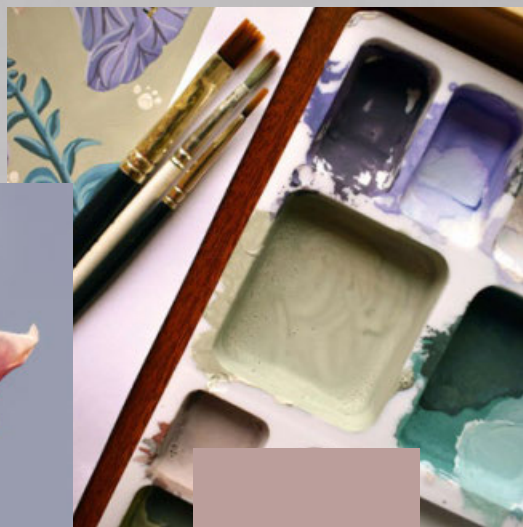
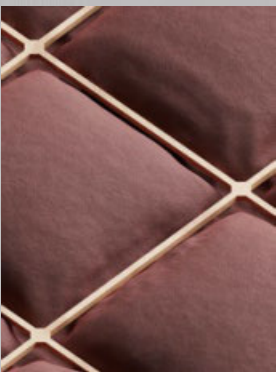
612 seagrass

You deserve more ...
comfort you can feel

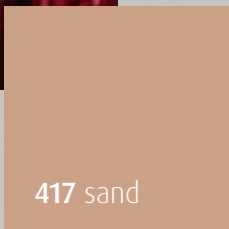


731 ocean

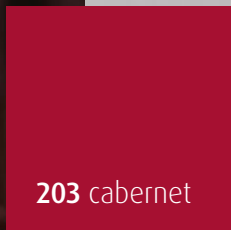
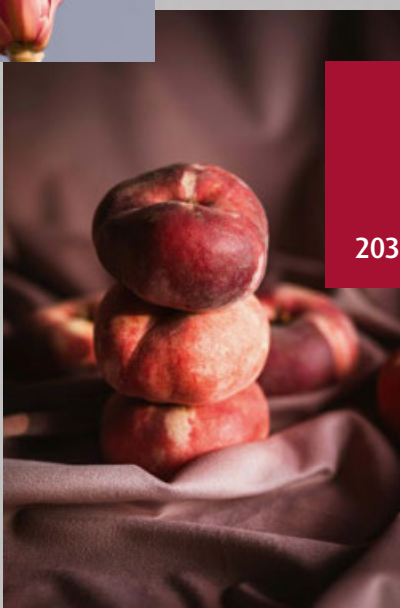
SELECTION



462 taupe



417 sand



203 cabernet

WELL BEING



24466 B-D | 75-95

34466 38-48

24467 B-E | 75-95

44466 38-48

24467 B-E | 75-95

44466 38-48



WELL BEING



24466 B-D | 75-95

34466 38-48

24467 B-E | 75-95

44466 38-48

24467 B-E | 75-95

34466 38-48



LOVELY SECRET



24790 B-F | 75-100

36089 38-46

25790 B-E | 75-95

47889 38-48

24790 B-F | 75-100

36089 38-46



SPARKLING LIGHT



14457 B-D | 75-95

34457 38-46

24457 B-E | 75-95

44457 38-48

14457 B-D | 75-95

44457 38-48



BEAUTIFUL CLASSIC



24349 B-D | 75-95

34349 38-46

24350 B-E | 75-95

44349 38-48

24349 B-D | 75-95

34349 38-46



BEAUTIFUL ROSE



24425 B-E | 75-95

34424 38-46

24424 B-E | 75-95

44424 38-48

24425 B-E | 75-95

34424 38-46



DOT & BLOSSOM



FLEXICUP®
- SPACER -



24427 B-E | 75-95

34426 38-46

24426 B-E | 75-95

44426 38-48

24426 B-E | 75-95

44426 38-48



RHOMBUS JACQUARD



18396 B-D | 75-95

38396 38-46

28396 B-E | 75-95

48396 36-46

28396 B-E | 75-95

38396 38-46



RHOMBUS JACQUARD



18396 B-D | 75-95

38396 38-46

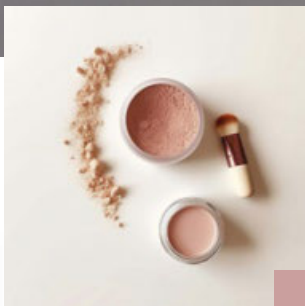
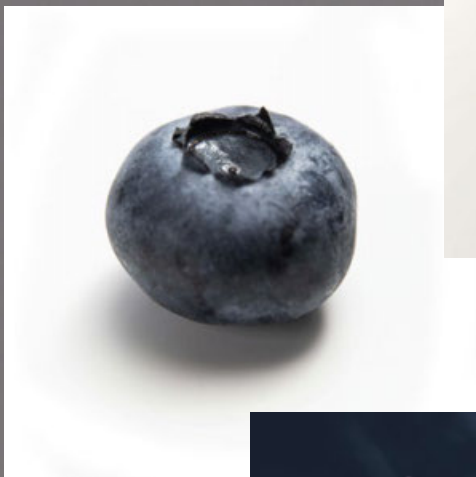
28396 B-E | 75-95

48396 36-46

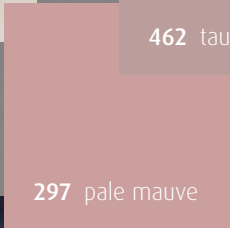
28396 B-E | 75-95

48396 36-46

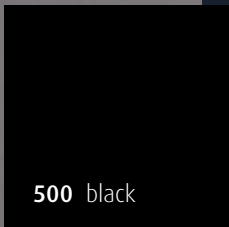
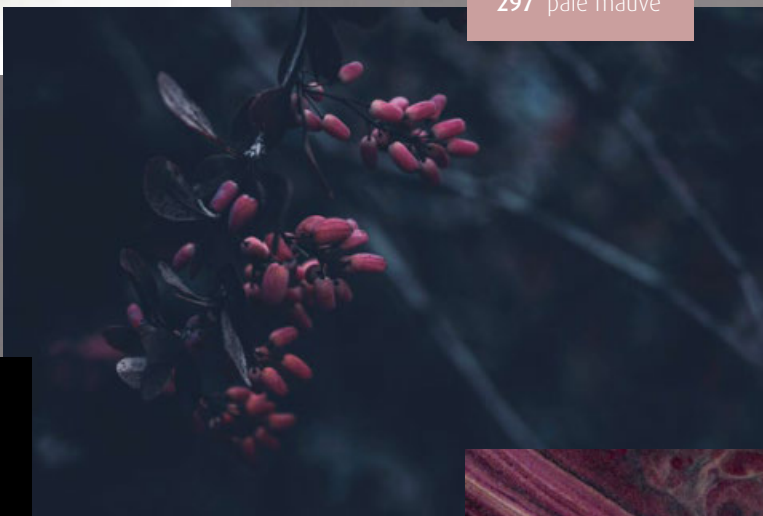




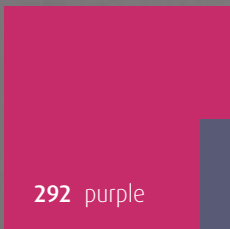
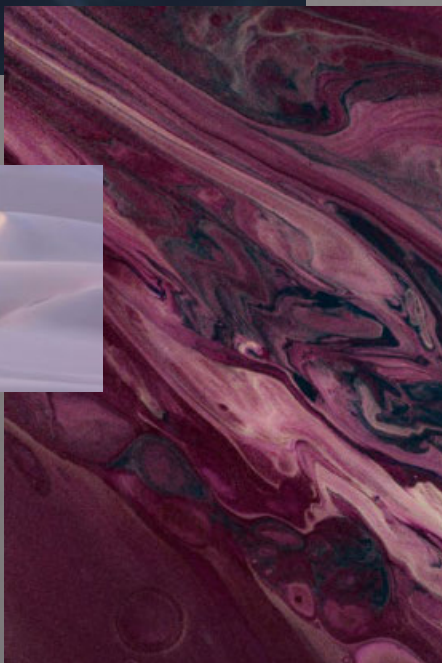
462 taupe



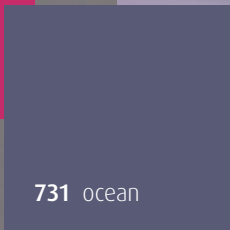
297 pale mauve



500 black

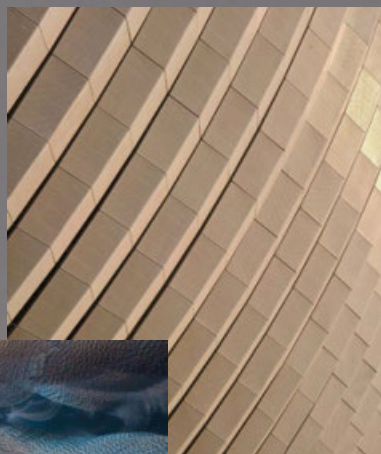


292 purple



731 ocean

FASHION



You deserve more ...
colour that makes
you shine

BONDED MICRO



18392 S-XXL

48392 S-XXL

18393 S-XXL

48393 S-XXL

18392 S-XXL

48392 S-XXL



TEMPTING PASSION



18359 A-C | 70-90

38359 36-44

28359 B-D | 75-95

48359 36-46



28359 B-D | 75-95

38359 36-44

HAPPY CHOICE



25448 B-D | 75-95

35448 36-44

15448 A-C | 70-90

45448 36-46

15448 A-C | 70-90

45448 36-46



CLASSIC LACE



FLEXICUP®
- SPACER -



14660 A-C | 70-95

24660 B-E | 75-100

44660 36-46

24560 B-E | 75-95

562 36-48

34660 36-46

24560 B-E | 75-95

34660 36-46



CLASSIC LACE



14660 A-C | 70-95

24660 B-E | 75-100

44660 36-46

24560 B-E | 75-95

562 36-48

34660 36-46

24660 B-E | 75-100

562 36-48



NATURAL EXPERIENCE



18394 A-C | 70-95

48394 36-46

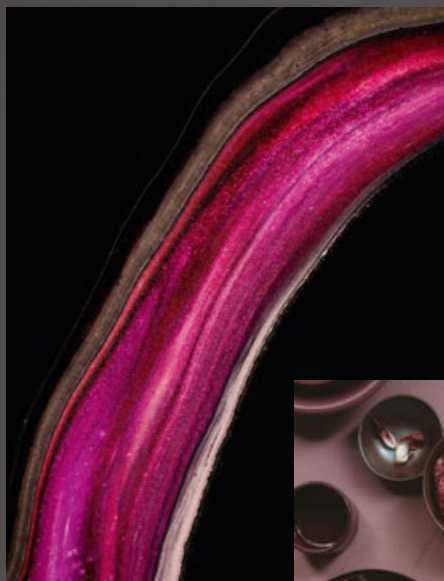


38394 38-46

38395 36-44

| | |
|-------|-------|
| 38394 | 38-46 |
| 48394 | 36-46 |





500 black

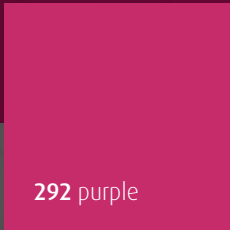


293 bordeaux



You deserve more ...
sparks of passion

X-Mas



292 purple

WINTER TIME



24556 B-D | 75-95

34556 36-44

24557 B-E | 75-95

44556 36-46

24557 B-E | 75-95

44556 36-46



EYELASH LACE



24561 A-C | 70-90

44561 36-46



34561 36-44

24562 B-D | 75-95

44562 36-44



BRILLIANT DOT



24558 A-C | 70-90

34558 36-44

24559 B-D | 75-95

44558 36-46

24559 B-D | 75-95

44558 36-46



SELECTION

TITEL|04|05 | WELL BEING



24466 | Schalen-BH/paddes bra /
SG paddé
B-D | 75-95



24467 | Bügel-BH/wire bra /
SG avec armatures
B-E | 75-95



34466 | Panty/shorty
38-48



44466 | Slip/brief
38-48

203 cabernet

Grundware/main material/matériel de base:
75% Polyamid / polyamide
25% Elasthan/elastane / élasthanne
Spitze/lace/dentelle:
86% Polyamid / polyamide
14% Elasthan/elastane / élasthanne
Futter/lining / doublure:
100% Polyamid / polyamide

TITEL|06|07 | WELL BEING



24466 | Schalen-BH/paddes bra /
SG paddé
B-D | 75-95



24467 | Bügel-BH/wire bra /
SG avec armatures
B-E | 75-95



34466 | Panty/shorty
38-48



44466 | Slip/brief
38-48

417 sand

Grundware/main material/matériel de base:
75% Polyamid / polyamide
25% Elasthan/elastane / élasthanne
Spitze/lace/dentelle:
86% Polyamid / polyamide
14% Elasthan/elastane / élasthanne
Futter/lining / doublure:
100% Polyamid / polyamide

08|09 | LOVELY SECRET



24790 | Bügel-BH/wire bra /
SG avec armatures
B-F | 75-100

90% Polyamid / polyamide
10% Elasthan / elastane / élasthanne



25790 | Spacer-BH/spacer bra / SG spacer
B-E | 75-95 **FLEXICUP**

85% Polyamid / polyamide
15% Elasthan / elastane / élasthanne
Cup Material/coupe le matériel:
90% Polyester
10% Elasthan / elastane / élasthanne



36089 | Panty/shorty
38-46

92% Polyamid / polyamide
8% Elasthan / elastane / élasthanne



47889 | Slip/brief
38-48

90% Polyamid / polyamide
10% Elasthan / elastane / élasthanne

NOS 203 cabernet
NOS 100 white
NOS 209 nude
NOS 500 black

10|11 | SPARKLING LIGHT



14457 | Soft-BH Einlage / padded soft cup bra / SG paddé sans armatures
B-D | 75-95



24457 | Schalen-BH / paddes bra / SG paddé
B-E | 75-95



34457 | Panty / shorty
38-46



44457 | Slip / brief
38-48

12|13 | BEAUTIFUL CLASSIC



24349 | Schalen-BH / paddes bra / SG paddé
B-D | 75-95



24350 | Bügel-BH / wire bra / SG avec armatures
B-E | 75-95



34349 | Panty / shorty
38-46



44349 | Slip / brief
38-48

14|15 | BEAUTIFUL ROSE



24424 | Spacer-BH / spacer bra / SG spacer
B-E | 75-95 **FLEXICUP**
Cup Material / coupe le matériel:
90% Polyester
10% Elasthan / elastane / élasthanne



24425 | Bügel-BH / wire bra / SG avec armatures
B-E | 75-95



34424 | Panty / shorty
38-46



44424 | Slip / brief
38-48

- 731** ocean
- NOS 209** nude
- NOS 500** black

Grundware / main material / matériel de base:
80% Polyamid / polyamide
20% Elasthan / elastane / élasthanne
Futter / lining / doublure:
78% Polyamid / polyamide
22% Elasthan / elastane / élasthanne

- 612** seagrass
- NOS 314** ivory
- NOS 209** nude
- NOS 500** black

Jacquard Material / matériau jacquard:
85% Polyamid / polyamide
15% Elasthan / elastane / élasthanne
Spitze / lace / dentelle:
90% Polyamid / polyamide
10% Elasthan / elastane / élasthanne
Futter / lining / doublure:
100% Baumwolle / cotton / coton

- 297** pale mauve
- NOS 100** white

Grundware / main material / matériel de base:
90% Polyamid recycled / polyamide recycled
10% Elasthan / elastane / élasthanne
Spitze / lace / dentelle:
90% Polyamid / polyamide
10% Elasthan / elastane / élasthanne
Futter / lining / doublure:
92% Polyamid / polyamide
8% Elasthan / elastane / élasthanne

16|17 | DOT & BLOSSOM



24426 | Spacer-BH / spacer bra / SG spacer
B-E | 75-95 **FLEXICUP**
Cup Material / coupe le matériel:
90% Polyester
10% Elasthan / elastane / élasthanne



24427 | Bügel-BH / wire bra /
SG avec armatures
B-E | 75-95



34426 | Panty / shorty
38-46



44426 | Slip / brief
38-48

18|19 | RHOMBUS JACQUARD



18396 | Soft-BH Einlage / padded
soft cup bra / SG paddé sans armatures
B-D | 75-95



28396 | Schalen-BH / paddes bra /
SG paddé
B-E | 75-95



38396 | Panty / shorty
38-46



48396 | Slip / brief
36-46

20|21 | RHOMBUS JACQUARD



18396 | Soft-BH Einlage / padded
soft cup bra / SG paddé sans armatures
B-D | 75-95



28396 | Schalen-BH / paddes bra /
SG paddé
B-E | 75-95



38396 | Panty / shorty
38-46



48396 | Slip / brief
36-46

293 bordeaux
NOS 209 nude

Grundware / main material / matériel de base:
85% Polyamid / polyamide
15% Elasthan / elastane / élasthanne
Spitze / lace / dentelle:
90% Polyamid / polyamide
10% Elasthan / elastane / élasthanne
Futter / lining / doublure:
65% Polyamid / polyamide
35% Elasthan / elastane / élasthanne

462 taupe

Jacquard Material / matériau jacquard:
65% Polyamid / polyamide
35% Elasthan / elastane / élasthanne
Spitze / lace / dentelle:
90% Polyamid / polyamide
10% Elasthan / elastane / élasthanne
Tüll / Tulle:
92% Polyamid / polyamide
8% Elasthan / elastane / élasthanne

NOS 314 ivory

Jacquard Material / matériau jacquard:
65% Polyamid / polyamide
35% Elasthan / elastane / élasthanne
Spitze / lace / dentelle:
90% Polyamid / polyamide
10% Elasthan / elastane / élasthanne
Tüll / Tulle:
92% Polyamid / polyamide
8% Elasthan / elastane / élasthanne

FASHION

24|25 | BONDED MICRO



18392 | Soft-BH Einlage/padded soft cup bra/SG paddé sans armatures S-XXL



18393 | Bustier S-XXL

Grundware/main material/matériel de base:
68% Polyamid/polyamide
32% Elasthan/elastane/élasthanne



48392 | Slip MIDI/brief MIDI S-XXL



48393 | Slip MAXI/brief MAXI S-XXL

Grundware/main material/matériel de base:
80% Polyamid/polyamide
20% Elasthan/elastane/élasthanne

- 292** purple
- NOS 209** nude
- NOS 428** skin
- NOS 500** black

26|27 | TEMPTING PASSION



18359 | Soft-BH Einlage/padded soft cup bra/SG paddé sans armatures A-C | 70-90



28359 | Schalen-BH/paddes bra/SG paddé B-D | 75-95



38359 | Panty/shorty 36-44



48359 | Slip/brief 36-46

- 297** pale mauve
- NOS 314** ivory
- NOS 500** black

Grundware/main material/matériel de base:
86% Polyamid/polyamide
14% Elasthan/elastane/élasthanne
Spitze/lace/dentelle:
87% Polyamid/polyamide
13% Elasthan/elastane/élasthanne

28|29 | HAPPY CHOICE



15448 | Soft-BH/soft cup bra/SG sans armatures A-C | 70-90



25448 | Schalen-BH/paddes bra/SG paddé B-D | 75-95



35448 | Panty/shorty 36-44



45448 | Slip/brief 36-46

- 500** black
- NOS 314** ivory
- NOS 417** sand

Grundware/main material/matériel de base:
86% Polyamid/polyamide
14% Elasthan/elastane/élasthanne
Spitze/lace/dentelle:
87% Polyamid/polyamide
13% Elasthan/elastane/élasthanne
Futter/lining/doublure:
90% Polyamid/polyamide
10% Elasthan/elastane/élasthanne

30|31 | CLASSIC LACE



14660 | Soft-BH Einlage/padded soft cup bra/SG paddé sans armatures A-C | 70-95



24560 | Spacer-BH/spacer bra/SG spacer B-E | 75-95 **FLEXICUP**
Cup Material/coupe le matériel:
90% Polyester
10% Elasthan/elastane/élasthanne



24660 | Bügel-BH/wire bra/SG avec armatures B-E | 75-100



562 | Miederslip/girdle/culotte gainante 36-48



34660 | Panty/shorty 36-46



44660 | Slip/brief 36-46

- **462** taupe
- NOS** **100** white
- NOS** **209** nude
- NOS** **233** pearl
- NOS** **500** black
- NOS** **580** dusty grey

Grundware/main material/matériel de base:
90% Polyamid/polyamide
10% Elasthan/elastane/élasthanne

Spitze/lace/dentelle:
90% Polyamid/polyamide
10% Elasthan/elastane/élasthanne

Grundware/main material/matériel de base:
85% Polyamid/polyamide
15% Elasthan/elastane/élasthanne

Spitze/lace/dentelle:
90% Polyamid/polyamide
10% Elasthan/elastane/élasthanne

32|33 | CLASSIC LACE



14660 | Soft-BH Einlage/padded soft cup bra/SG paddé sans armatures A-C | 70-95



24560 | Spacer-BH/spacer bra/SG spacer B-E | 75-95 **FLEXICUP**
Cup Material/coupe le matériel:
90% Polyester
10% Elasthan/elastane/élasthanne



24660 | Bügel-BH/wire bra/SG avec armatures B-E | 75-100

- **731** ocean
- NOS** **100** white
- NOS** **209** nude
- NOS** **233** pearl
- NOS** **500** black
- NOS** **580** dusty grey

Grundware/main material/matériel de base:
90% Polyamid/polyamide
10% Elasthan/elastane/élasthanne

Spitze/lace/dentelle:
90% Polyamid/polyamide
10% Elasthan/elastane/élasthanne

Rücktitel
34|35 | NATURAL EXPERIENCE



562 | Miederslip / girdle / culotte gainante
 36-48



34660 | Panty / shorty
 36-46



44660 | Slip / brief
 36-46



18394 | Soft-BH Einlage / padded soft cup bra / SG paddé sans armatures
 A-C | 70-95



38394 | BH-Shirt / bra shirt / top SG
 38-46



38395 | Panty / shorty
 36-44



48394 | Slip / brief
 36-46

X-Mas

38|39 | WINTER TIME



24556 | Schalen-BH / paddes bra / SG paddé
 B-D | 75-95



24557 | Bügel-BH / wire bra / SG avec armatures
 B-E | 75-95



34556 | Panty / shorty
 36-44



44556 | Slip / brief
 36-46

LENNING EcoVero™

- **518** dusty sky
- **500** black

Grundware / main material / matériel de base:
 85% Polyamid / polyamide
 15% Elasthan / elastane / élasthanne
 Spitze / lace / dentelle:
 90% Polyamid / polyamide
 10% Elasthan / elastane / élasthanne

Grundware / main material / matériel de base:
 95% Viskose
 5% Elasthan / elastane / élasthanne
 Spitze / lace / dentelle:
 89% Polyamid / polyamide
 11% Elasthan / elastane / élasthanne

- **293** bordeaux

Grundware / main material / matériel de base:
 86% Polyamid / polyamide
 14% Elasthan / elastane / élasthanne
 Spitze / lace / dentelle:
 83% Polyamid / polyamide
 17% Elasthan / elastane / élasthanne
 Futter / lining / doublure:
 100% Polyamid / polyamide

40|41 | EYELASH LACE



24561 | Push up BH/push up bra/
SG push up
A-C | 70-90



24562 | Schalen-BH/paddes bra/
SG paddé
B-D | 75-95



44561 | Slip/brief
36-46



44562 | String/thong
36-44



34561 | Negligé/negligé/nuisette
36-44

42|43 | BRILLIANT DOT



24558 | Push up BH/push up bra/
SG push up
A-C | 70-90



24559 | Schalen-BH/paddes bra/
SG paddé
B-D | 75-95



34558 | String-Panty/panty/shorty
36-44



44558 | Slip/brief
36-46

■ 500 black

Grundware/main material/matériel de base:

86% Polyamid/polyamide

14% Elasthan/elastane/élasthanne

Spitze/lace/dentelle:

83% Polyamid/polyamide

14% Elasthan/elastane/élasthanne

3% Polyester

Tüll/Tulle:

90% Polyamid/polyamide

10% Elasthan/elastane/élasthanne

■ 292 purple

Grundware/main material/matériel de base:

86% Polyamid/polyamide

14% Elasthan/elastane/élasthanne

Spitze/lace/dentelle:

85% Polyamid/polyamide

15% Elasthan/elastane/élasthanne

SASSA wird noch nachhaltiger

Das Thema Nachhaltigkeit hat bei Sassa eine große Bedeutung. In Zeiten des Klimawandels steht für uns Mode zu fairen Preisen durch nachhaltiges, verantwortungsbe-
wusstes Handeln an erster Stelle.

SASSA becomes even more sustainable

The topic of sustainability is very important to Sassa. In times of climate change, we prioritise fashion at fair prices through sustainable, responsible action

Fabrics, laces and accessories are carefully selected in order to comply with the »Oeko-Tex100« standard as well as with the requirements of the REACH regulation. We also use more sustainable and rapidly renewable raw materials such as bamboo, Modal & TENCEL. Sustainable polyamide or polyester fabrics in accordance with the »Global Recycled Standard« (e.g. made from recycled PET bottles and old fishing nets) are also used in various items.

All cardboard shipping boxes, online retail packaging and printed products (catalogue, hangtags) are made of wood from responsibly managed sources (FSC-certified). The outer packaging bags still required are made of recyclable polyester.

As a member of the amfori BSCI (Business Social Compliance Initiative), SASSA commits itself and its production partners to the underlying code of conduct for good working conditions and responsible behaviour. For over 35 years, we have maintained long-term, fair and loyal relationships with our production companies.

We cooperate with the non-profit organisation Bruderhaus Diakonie of the Gustav Werner Foundation in the area of goods preparation and services. Their workshop offers people with disabilities the opportunity to actively participate in working life.



sassa

niederlassungen / branches

Germany [Headquarter]

Sassa Mode GmbH
Mauchentalstraße 71
D-72574 Bad Urach
Phone +49 7125 1441-0
Fax +49 7125 1441-86
E-Mail info@sassamode.com
Web www.sassa.eu

Czech Republic

Sassa Mode s.r.o.
Phone +420 483 382 879
E-Mail info@sassamode.cz
Web www.sassa.cz

Slovakia

Sassa Mode s.r.o.
Phone +420 483 382 879
E-Mail info@sassamode.sk
Web www.sassa.sk

Switzerland

Sassa Mode AG
Phone +41 41 748 80 00
E-Mail info@sassamode.ch
Web www.sassafashion.ch

shop online www.sassa.eu



We are a member of amfori
We act for a more
sustainable supply chain



VDM+

